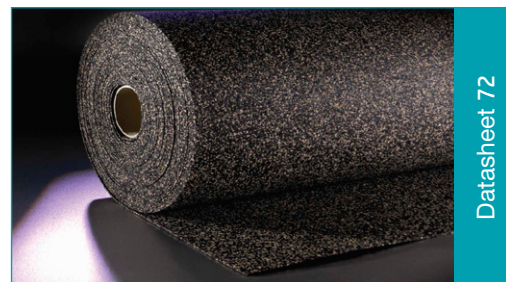
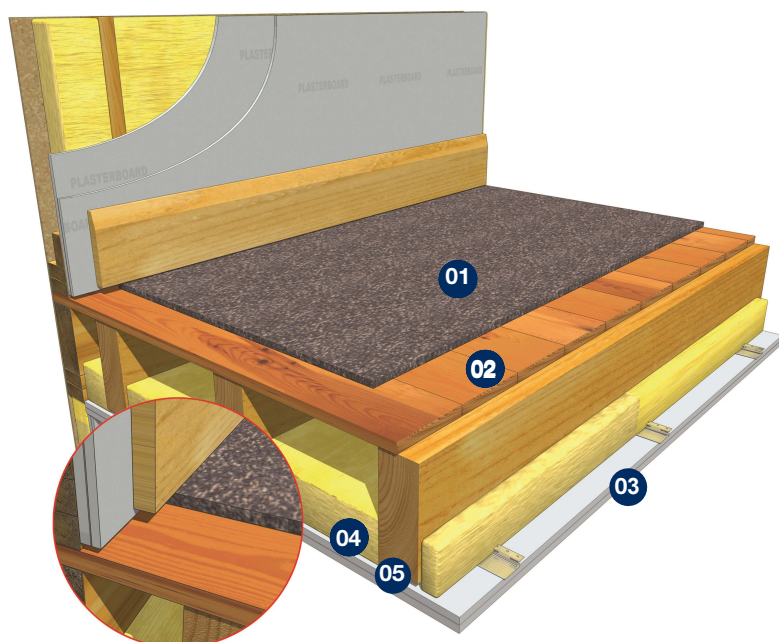


# Acoustic Impacta 4551 Timber

FOR TIMBER FLOOR STRUCTURES



Datasheet 72



- 01 JCW Acoustic Impacta 4551 timber 4.5mm
- 02 Existing Subfloor
- 03 Resilient Bars and 2 layers x 15mm Acoustic Plasterboard
- 04 100mm x 45kg/m<sup>3</sup> Acoustic Slab
- 05 225mm depth Timber Joists



**Product Code:**

Recycled rubber bonded with cork granulate: Impact sound bonded surface layer for timber floors

**Impacta 4551 Timber**

The most economical of materials, JCW's Impacta 4551 Timber has a host of other benefits. It is made from 100% recycled materials – ideal for those specifiers who must adhere to environmental obligations.

It reduces construction heights but can still take services and will bond to any floor finish. It is incredibly quick and easy to install, and offers long term, market-leading performance. This versatile, multi-functional product complies with Part E of the Building Regulations.

**Features**

- Specifically designed and tested for timber applications.
- Robust acoustic underlay material that attenuates impact sound at source.
- Suitable for new build or refurbishment projects; and for use with underfloor heating.
- Ready for final floor finish e.g laminates, carpets & carpet tiles (other finishes may require additional floor preparation)
- Offers long term performance and is resistant to ageing and deformation.
- Following extensive testing, JCW Impacta Adhesive is recommended to bond the product to the base floor.
- Environmentally friendly

**Roll Size:** 4.5mm x 1050mm x 10m (10.50 m<sup>2</sup>) Weight: 34.5kg

**BRE Test Results - Test no L216-013, L216-014**

Airborne: Rw + ctr 48dB Impact: Ln,w 56 dB

**Ancillary Products**

- 1027 JCW Acoustic Sealant (310ml)
- 1022 JCW Impacta Adhesive

Domestic Dwellings | Offices | Hotels | Conference Centres | Leisure Centres | Schools | Restaurants | Showrooms



Unit 32-34 Waters Meeting Development  
Britannia Way, Bolton, BL2 2HH

Sales helpline **01204 548400**  
8.30am - 5.00pm Monday to Friday

sales@acoustic-supplies.com  
**www.acoustic-supplies.com**

## Guidance notes for installation of JCW Impacta Mat 4551 Timber: 4.5mm

### Preparation:

1. It is important that the sub-floor is dry, clean, and free of dust, debris and adequately prepared to enable a good adhesive bond. The level of floor preparation required will be determined by the final floor finish specified.
2. JCW Impacta Mat 4551 stretches slightly when rolled up. Unroll and leave 3-4 hours prior to cutting & fitting.

### Laying JCW Impacta Mat 4551:

BS 8203; 2017 and the following guidelines should be observed.

1. JCW Impacta Adhesive has been tested and is suitable for bonding JCW Impacta Mat 4551 to the majority of base floor types that may be considered. (JCW Impacta Adhesive available on request).
2. When laying JCW Impacta Mat 4551 into the adhesive ensure any air is removed by pressing from the centre outwards.
3. Roll JCW Impacta Mat 4551 from end to end & side to side using a 68kg flooring roller.
4. Cut & Trim JCW Impacta Mat 4551 using a sharp knife and straight edge. Ensure all edges are butt jointed.
5. On completion of the floor area wait for 30mins and roll the floor again.
6. The adhesive must be allowed to fully cure prior to overlaying of floor finishes, trafficking and loading in.
7. **Plasticiser Migration:** JCW Impacta Mat 4551 has been tested and is considered resistant to plasticiser migration according to the SATRA test report. The full report is available upon request.

**Please note:** the above installation notes are for guidance only and may require further verification via a specialist adhesive or flooring manufacturer.

**Disclaimer:** The product and installation information contained in this Data Sheet and General Installation Guide is to the best of our knowledge correct. Please contact us direct, prior to starting works, for the latest information to enable confirmation of the specification.

**Please Note: We recommend seeking appropriate advice from the relevant manufacturer of the final floor finish with regards to any additional preparation that may be required.**

Domestic Dwellings | Offices | Hotels | Conference Centres | Leisure Centres | Schools | Restaurants | Showrooms